

FLUSHINGSYSTEMS



Flush cisterns



valsir[®]
QUALITY FOR PLUMBING

TROPEA3

The advanced Valsir technology combined with the refined and elegant design of the push plates



THE PERFECTION OF SIMPLICITY

The constant attention to market demands and the policy inspired by constant improvement of the production processes and product quality has allowed us to add the innovative in-wall flushing cistern Tropea3, to the Valsir's product range.

Tropea3 has come out on top in terms of performance, noise reduction and durability in compliance with EN 14055. The installation frames in the Tropea3 product line meet the regulatory requirement of EN 997.



Characteristics

- **Ease of installation:** improved installation thanks to the patented rotating inlet fitting in brass.
- **Highly technological:** thanks to an innovative outlet valve that guarantees the correct consumption of water at each flush and adaptability to all types of WC pans.
- **Reliability:** the internal components are made of materials that prevent the build-up of lime-scale.
- **Water saving:** Adjustment of the flush volume to 6/3 litres or 4.5/3 litres allows the reduction of water consumption following Green Building principles.
- **Activation type:** a choice of mechanical, pneumatic or electronic activation.
- **Easily serviced:** thanks to the reduced number of internal components and readily available spare part kits.



WINNER

Winner was designed to meet the plumbing requirements of a global market and to facilitate installation in all situations



MAXIMUM ATTENTION TO DETAIL

The minimalist design of the push plates and the functional components, make of it a complete and reliable product.



Characteristics

- **Eco-compatible:** the dual flush option of 7/3 litres or 6/3 litres, allows significant water savings.
- **Easy installation:** Winner is designed to facilitate installation in all situations, even the most difficult.
- **Total safety:** Winner can be taken apart and reassembled piece by piece following installation. Furthermore, should it be damaged, the cistern can be repaired without removing it from the wall.
- **Type:** thanks to the Fixsystem, Block and free-standing Block frames, Winner can be installed in all situations and in all wall types, in accordance with the EN 997.
- **Winner meets the regulatory requirements of EN 14055.**



CUBIK

Ideal cistern
for space exploitation



casir

THE BEST USE OF SPACE

The product characteristics of Cubik make it perfect for installation in duct walls with the possibility of connecting the cistern to the pan with a flexible flush pipe.

The possibility of an offset installation of up to 700 mm and a front or top operation complete its characteristics of maximum versatility.



Characteristics

- **Versatile:** Cubik is a compact cistern and is therefore the ideal choice for duct walls and prefabricated bathrooms.
- **Innovative:** positioning of the plate at the front or on top gives architects and interior designers the freedom to be creative and innovative.
- **Flexible:** Cubik guarantees maximum flush activation flexibility thanks to the pneumatic actuation.
- **Type:** Cubik, supplied with a free-standing mounting frame can be fitted in all situations and in all wall types, in compliance with the regulatory requirements of EN 997.
- **Cubik meets the regulatory requirements of EN 14055.**



EVOLUT

The best positioning
for your flush!



valsir

FLEXIBILITY AND SIMPLICITY

Evolut - not just a solution to your plumbing needs, but also a piece of furniture for your bathroom.

The flush panel can be installed either on top or front position.

Characteristics

- **Sustainable:** Evolut provides significant water savings thanks to the flush adjustment possibility of 4.5/3 litres as well as the traditional 6/3 and 7/3 litres.
- **Innovative:** positioning of front or top plate.
- **Compact:** minimum installation height of just 82 cm from the finished floor.
- **Installation flexibility:** thanks to the Fixsystem and Block mounting frames, Evolut can be installed in all situations and in any wall type, in compliance with the regulatory requirements of EN 997.
- **Evolut meets the regulatory requirements of EN 14055.**



ARIAPUR

The innovative Ariapur air extractor is the ideal choice to ensure the renewal of air inside the bathroom



THE SOLUTION AGAINST FOUL ODOURS

The innovative system, Ariapur, is the ideal solution to ensure healthy fresh air inside the bathroom. Ariapur captures 80% of odours directly off the WC pan, eliminating them before they spread. At the same time, it guarantees elimination of stale air and condensation from the bathroom.

A **silent** product, **easily installed** and compact in size, its **minimalist design** and the **possibility of painting it**, makes it suitable for all bathrooms.

The ideal solution in bathrooms without windows (in houses, firms or public places), but also in all situations where aeration of the room is not practical (heat loss, privacy, etc.).



Characteristics

- **The ideal solution** to the problem of air renewal in **bathrooms without windows** and in **public areas**.
- Air extraction system with the **combined extraction of air from the WC pan and from the room**.
- **High rate** of air extraction: 100 m³/h.
- **Extremely silent** in total compliance with regulatory limits.
- Activation triggered by switch or sensor inside the room, shut-off timer.
- Total freedom in positioning and installation, either in the wall or ceiling.
- Elegance thanks to the minimalist design, Ariapur fits discreetly in all surroundings.
- **Easily serviced** thanks to the extractable motor without contact with electrical connections.
- Attachment to **flush pipe reversible** for installations to the right or left.



DESIGN PLATES



PUSH PLATES AND ACTUATORS



CORALLO3

Valsir's Corallo3 is an exposed cistern that fits in nicely with all bathroom surroundings thanks to its unpretentious lines and ease of installation



valsir

INSTALLATION VERSATILITY

Corallo3 is an innovative dual flush exposed cistern (6/3 litres).

Thanks to the 5 water inlet possibilities, the low and medium installation heights and the push-fit flush pipe, it is suitable for and simplifies all installations.

Corallo3 incorporates a special receptacle for sanitizing tablets.



Characteristics

- **Mechanical dual flush activation.**
- **Pneumatic activation** option of dual or single flush.
- **Ease of installation:** the flush pipe is of the push-fit type.
- **Hygiene:** presence of a receptacle for sanitizing tablets.
- **Water saving:** possibility of adjusting the flush volume to 9/4.5 l or 6/3 l.
- **Adaptability:** possibility of low or medium height installation.
- **Flexibility:** inlet valve can be connected in 5 different positions.
- **Versatility:** possibility of remote control dual flush for applications in bathrooms with facilitated access.
- **Corallo3 meets the regulatory requirements of EN 14055.**



ATLANTA

Several installation options

Its contemporary design distinguishes itself by its soft and smooth lines; structurally, the cover is made of polished ABS; this material is capable of maintaining its shine and resistance to external stress.

The controls with the possibility of choosing the flush volume 9/4.5 litres or 6/3 litres and the state-of-the-art mechanisms render it a jewel in terms of technology and design.



Characteristics

- **Eco-compatible:** water-saving thanks to dual flush: choice of two flush volumes, 9 l or 6 l.
- **Easy:** adjustment of flush volume is extremely easy and quick.
- **Versatile:** the Atlanta cistern can be dual flush, single flush with interruption or pneumatic.
- **Installations:** Atlanta offers various installation options: close-coupled and low position.
- **Elegance:** thanks to its essential design, the cistern fits in everywhere.
- **Atlanta meets the regulatory requirements of EN 14055.**



PERK

Simple and reliable

Made of resistant and long-lasting materials, with a simple and reliable operation, Perk distinguishes itself even further due to its rounded finish that fits in perfectly with modern floors and sanitary appliances, placing itself in the situation where a cistern must also satisfy precise aesthetical criteria, becoming an integral part of the bathroom furnishing.

Characteristics

- **Practical:** meticulously engineered to guarantee easy servicing.
- **Simplicity:** adjustment of flush volume at 6 l is extremely easy and fast.
- **Perk meets the regulatory requirements of EN 14055.**



MIDA

Maximum simplicity

For the low, medium and high installation, Valsir proposes the Mida flush cistern: the possibility of choosing the flush volume and the stop function, allow for direct control of the water and consumption in every moment.

Its neutral but cared for design makes sure that it fits in perfectly with all types of bathroom settings (also available with pneumatic control).

Characteristics

- **Versatility:** Mida is available with a mechanical flush plate with single flush and interruption option or with a pneumatic operation.
- **Water-saving:** the flush volume can be set at 9 l or 6 l.
- **Practicality:** thanks to its accurate design it is extremely easy to service.
- **Simplicity:** adjustment of flush volume is extremely easy and rapid.
- **Mida meets the regulatory requirements of EN 14055.**



MUREX

Ideal for high position installation

The Murex flush cistern has a decidedly rigorous design and is "vintage": the chain-controlled flush in fact, brings to mind the more traditional bathrooms.

It is particularly suitable for installation in public toilets, due to its extremely reliable and efficient flush technology (also available with pneumatic control).

Characteristics

- **Installation:** Murex is the ideal solution for high position installation.
- **Versatile:** Murex can be single flush or pneumatic.
- **Water saving:** adjustment of flush volume can be 9 l or 6 l.
- **Practicality:** thanks to its accurate design, it is extremely easy to service.
- **Simplicity:** adjustment of flush volume from 9 l to 6 l is extremely easy and rapid.
- **Murex meets the regulatory requirements of EN 14055.**





**RESEARCH &
DEVELOPMENT
PROGETTI**



RELIABILITY WITHOUT COMPROMISE

The corporate policy of Valsir is, and has always been, oriented towards continuous research in product innovation, the development of new systems and the application of the latest advances in technology.

Technologically advanced production processes are combined on a daily basis with a continuous pursuit of a quality level without compromise. That is precisely why more than 150 international quality marks certify our products.

Within the Valsir laboratories all the tests required by international regulations are performed, real installation situations are recreated and additional tests are carried out, tightening up on test conditions, in order to supply the market with a high performing and top quality product.





Lumière at Regent Palace - Sydney (Australia)

REFERENCE



UNA Hotel Malpensa - Cerro Maggiore (Italy)



International airport Borispol - Kiev (Ukraine)



Hospital Chambéry - Chambéry (France)



Museum of Contemporary Art - Bucharest (Romania)



Urb. Lualca - Madrid (Spain)



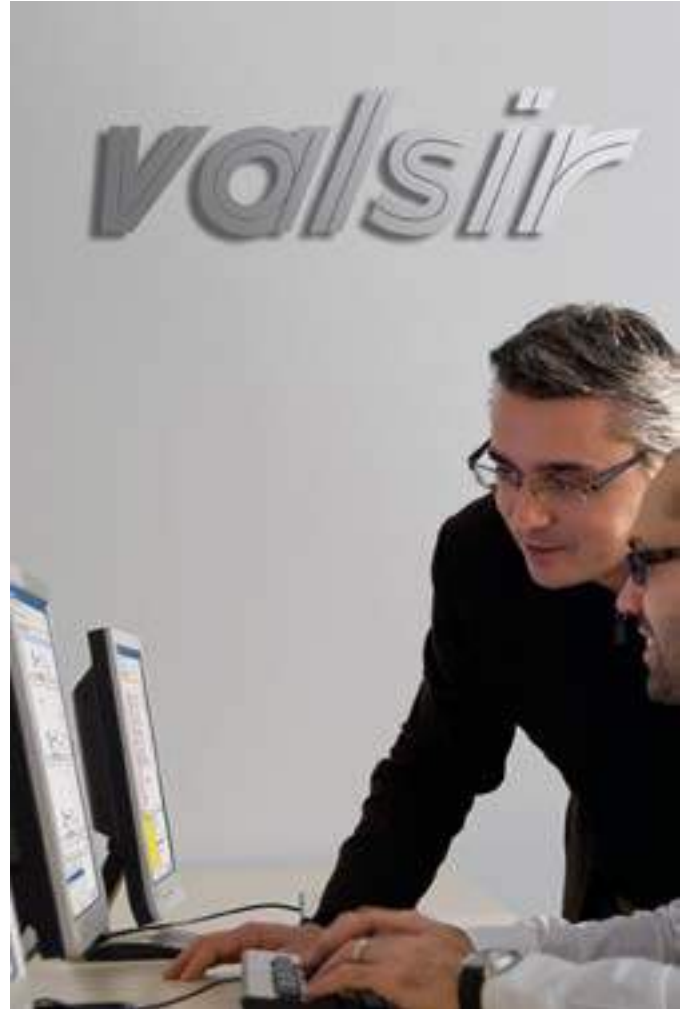
Hotel Cristallo - Cortina D'Ampezzo (Italy)



TECHNICAL SUPPORT AND ASSISTANCE

Valsir provides complete support both during the planning phase and on site, thanks to a first-class technical office made up of a team of highly experienced engineers, capable of dealing with the most complex system requirements.

Valsir also boasts an important training centre called **Valsir Academy** catering for clients, distributors, plumbers and planners. Two highly equipped halls are available where theoretical and practical courses are organized on the use and design of water supply systems using the Silvestro software, a program that was developed specifically within Valsir.

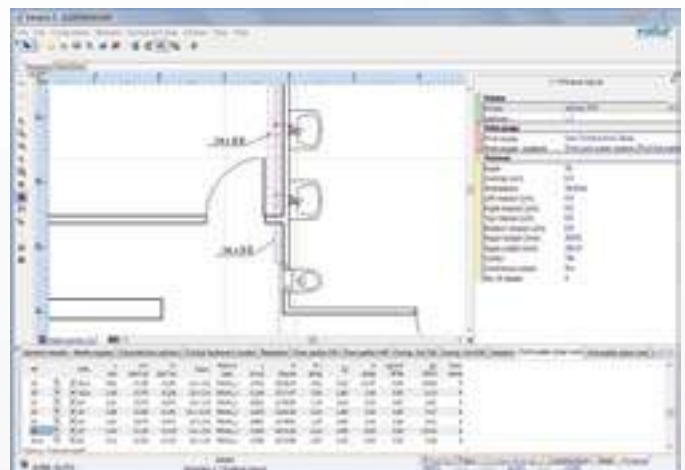


SILVESTRO SOFTWARE

The design of floor and radiator heating systems, water supply as well as waste and drainage systems, is extremely easy and the production of the project technical documents is extremely rapid when using the Silvestro software program.

Fast, simple, unique, Silvestro possesses numerous strong points:

- rapid learning curve thanks to a simple and intuitive interface;
- completely graphic background that facilitates input of the project details;
- automatic drawing of the loops in the floor radiant systems;
- automatic repositioning of the stack points on the plan view;
- generation of calculation reports that are exportable in an .xls format;
- import and export of files in .dwg format;
- immediate update of software with a guided procedure;
- creation of complete bill of materials from the project files.



QUALITY AND ENVIRONMENT



Efficient processes and reliable products are not the only parameters used to evaluate a company's conduct: today, in fact, the capacity of the company and its management team **to design and implement production processes that are sustainable from an environmental point of view** are of equal importance.

Valsir has always been committed to the manufacture of **recyclable products** and the implementation of **sustainable processes**, in line with the most advanced **Green Building** principles (green building and environmentally friendly project design), and today boasts highly sustainable production plants which, thanks to the use of renewable energy and planning that aim at the conservation of resources, have obtained a **Class A energy certificate**.

The consistency of Valsir's commitment is demonstrated by its **product approvals** which amount to **150** in total, obtained around the world from the most severe certification bodies (figure updated on 03/03/2014), and by the **certified quality system** in compliance with the European Standard **UNI EN ISO 9001:2008**.



Production processes and management systems that are verified, monitored and certified.



Sustainable production plants and processes, use of renewable energies, sustainability of resources.



Products that are verified, monitored and certified by recognized certification bodies.



Recyclable products and production processes with a low environmental impact.

THE VALSIR RANGE



WASTE SYSTEMS



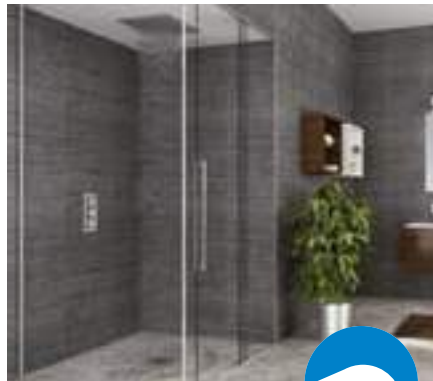
SUPPLY SYSTEMS



GAS SYSTEMS



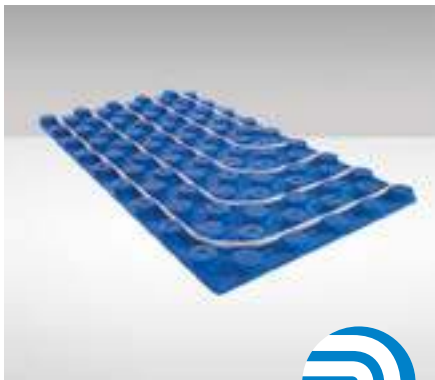
FLUSHING SYSTEMS



BATHROOM SYSTEMS



TRAPS



RADIANT SYSTEMS



DRAINAGE SYSTEMS



ACADEMY



VALSIR S.p.A.
 Località Merlaro, 2
 25078 Vestone (BS) - Italy
 Tel. +39 0365 877.011
 Fax +39 0365 81.268
 e-mail: valsir@valsir.it

www.valsir.it



MADE IN ITALY



valsir[®]
 QUALITY FOR PLUMBING